

PRESSUREPRO PRODUCT CATALOG

AUTO/VAN/TRUCK/SUV DIPOLE MONITOR – (Part #ALTPM6)

- 1 to 6 wheel positions / Telescoping antenna
- Displays pressure in PSI, BAR or kPa
- Low Pressure Alerts at 12.5% & 25%
- High Pressure Alert at 33%
- Self testing capability – signal strength & signal packets
- RS232 capable data feed
- Velcro mounting strips included
- *Power cord sold separately*



RV/TOW MONOPOLE MONITOR – (Part #RVBPM16)

- 1 to 16 wheel positions
- Displays pressure in PSI, BAR or kPa
- RS232 capable data feed
- Low Pressure Alerts at 12.5% & 25%
- High Pressure Alert at 33%
- Self testing capability – signal strength & signal packets
- Velcro strips for mounting included
- *Monopole antenna & power cord sold separately*



TRUCK/TRAILER MONOPOLE MONITOR – (Part #HDBPM34)

- 1 to 34 wheel positions
- Displays pressure in PSI, BAR or kPa
- On/Off Capability for alerts – light or buzzer alert capable
- Low Pressure Alerts at 12.5% & 25%
- High Pressure Alert at 33%
- Self testing capability – signal strength & signal packets
- Velcro strips for mounting included
- *Monopole antenna & power cord sold separately*



TRUCK/TRAILER MONOPOLE RS232 MONITOR – (Part #HDBPM34-RS232)

- 1 to 34 wheel positions
- Displays pressure in PSI, BAR or kPa
- On/Off Capability for alerts – light or buzzer alert capable
- Low Pressure Alerts at 12.5% & 25%
- High Pressure Alert at 33%
- Self testing capability – signal strength/signal packets
- Velcro strips for mounting included
- *Monopole antenna & power cord sold separately*



INDUSTRIAL RS232/DATA LOGGER MONITOR – (Part #HDEPM34-RS232DL)

- 1 to 34 wheel positions
- Displays pressure in PSI, BAR or kPa
- RS232 capable data feed
- Data logger – logs up to 45 days of tire pressure info
- Low Pressure Alerts at 12.5% & 25%
- High Pressure Alert at 33%
- Velcro strips for mounting included
- *Monopole antenna & power cord sold separately*
- *Data cable (2 DB9 connectors) not included*



Note: All Monitors and the Echo Repeater are the following dimensions: (6.5" W x 3.0" H x 0.5" D / Weight: 4 oz.)

ECHO REPEATER – (Part #ABPER-5)

- Telescoping dipole antenna included
- Velcro strips for mounting included
- *Power cord sold separately*



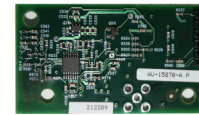
FUNCTIONAL DISPLAY MONITOR KIT – (Part #FDK)

- Scrolls through 10 wheel locations, lighting each location for 4 seconds
- Displays pressure readouts for each wheel location that lights.
- Two locations preset with low pressures to trigger beeping alert
- First alert at 12.5% / 2nd alert at 25%
- Beeping can be switched on/off
- AC/DC Wall Plug in kit (#AAPACDC) & 3.5” antenna included



EMBEDDED MONITOR BOARD – (Part # EBR34)

- Board can be embedded in other products to accept sensor signals for display.



SENSOR - (Part # APS1)

- Reads pressures from 10 – 199 psi
- Weight - .6 oz (17 grams)
- Dimensions: 1.11” D x 1.01” H



INDUSTRIAL SENSOR - (Part #APS1-IND)

- Reads 10 – 199 psi
- Weight - .7 oz (19 grams)
- For use with large bore industrial valve stems
- Robust electronics for industrial applications with a robust
- Case made with GE industrial plastics.
- Dimensions: 1.11” D x 1.02” H



ACCESSORIES:

CABLED ANTENNA KIT - (Part #ABPCA)

- For use with monopole monitor only
- 35 ft coax cable – one end attaches to monitor and other end attaches to 7.5 inch whip antenna (included)



FIXED END POWER CORD - (Part #AAPC1)

- Connects monitor to 12-volt power outlet
- 8 ft cord



STRIPPED END POWER CORD – (Part#AAPC3)

- Hard wired to a power source
- 8 ft cord



24/12VOLT FIXED END POWER CORD – (Part #AAPC5)

- Connects monitor to 24-volt power outlet
- Converts power from 24-volt to 12-volt
- 8 ft cord



AC/DC WALL PLUG-IN KIT - (Part #AAPACDC)

(Converts 110-volt AC to 12-volt DC)

- Kit includes power cord and AC/DC converter
- Power cord connects converter to all monitors and repeater
- Converter plugs into standard 110 outlet
- For use in vehicles that do not have a 12-volt power source
- 8 ft cord
- *Not for use with other devices*



front view side view



cord

RS232 FIXED END POWER CORD – (Part #AAPC7)

- Connects to 12-volt power outlet
- Includes RS232 data downloading capability
- 8 ft cord



VISOR CLIP/SUCTION CUPS – (Part #AAPVC)

- 2 clips per set
- Fits onto monitor from top or bottom for installation onto visor or window



SENSOR LOCK KIT – Part # Lock Nut Kit (LNK)

- Includes key ring wrench and nuts for 6 wheel positions.



MONOPOLE ANTENNA – 3.5 INCH - (Part #ABPPMA)



VELCRO PADS - (for mounting Monitor) – (Part #AAP3)

RAM MOUNT – (for mounting Monitor) – (Part #AAP11)

- Ram Mount with 2.5” arm and 2 knuckle end plates.
- Allows for direct mounting to vehicle
- Screws allow adjustment of mount at both top and bottom
- Total length and weight: 4” and 6.6 oz.
(Stem is 2.5” with weight of 2.8 oz. Round plates with knuckle ball adds 1.75” to top and bottom.)



RAM MOUNT SUCTION CUP ATTACHMENT – (Part #AAP12)

- Suction cup attachment attaches to windows, metal dashes (non-porous surfaces)
- Power suction lever insures secure fastening
- Total length and weight: 3.6 oz and 3.25”



RAM MOUNT MOUNTING PAD – (Part #AAP13)

- 2.43” Diameter double stick mounting pad
- Will stick to all non-porous surfaces

RAM MOUNT/SUCTION CUP COMBO – (Part #AAP14)

- Ram Mount and Suction Cup Combination
- Comes with suction cup attached at one end and a regular round mount plate on the other.



Contact Information: Tereck Diesel LTD.

Mailing Address: 1655 Dugald Road,
Winnipeg, Manitoba R2J 0H3

General Office Phone: (204) 654-9646

Faxsimilie / General Fax: (204) 654-9676

Toll Free: (877) 545-3884

Web Site: <http://www.tereckdiesel.com>

E-mail: info@tereckdiesel.com